

CHIAPPA firearms

USER'S MANUAL



1892 Lever Action



1886 Lever Action

Official sponsor:



ATTENTION: BEFORE REMOVING THE FIREARM FROM ITS PACKAGE READ & UNDERSTAND WARNINGS AND FULL INSTRUCTIONS AND PRECAUTIONS IN THIS OWNER'S MANUAL

Index

Page

Warnings.....	4
1892 and 1886 Lever Action range.....	6
Rifle nomenclature.....	8
Instructions for use.....	9
Loading the magazine.....	9
Sight adjustment.....	11
Magazine reduction removal.....	14
Ordinary and extraordinary maintenance.....	15
Problems - Causes – solutions.....	16
Exploded views and parts lists	17
Warranty conditions.....	25

All Armi Sport replica firearms are produced in the modern factory in Azzano Mella (Brescia, Northern Italy). The most attention has been paid to the internal parts that are CNC machined from solid steel, all are interchangeable with each other, mostly interchangeable with original components. All metal parts are highly polished and hardened to allow the smoothest action. While manufacturing is carried out with cutting-edge machinery, the finish is handcrafted according to tradition.

We thank you for choosing a Chiappa Firearms product and we are confident that it will meet your expectations.

WINCHESTER 1892 SHORT HISTORY

Designed by John M. Browning to replace the Model 1873, the 1892 Winchester rifle became one of the most popular lever actions of all time. It was based on his Model 1886, but reduced in size and chambered for the popular short cartridges used in the Winchester 1873, it was found to be mechanically stronger and cost less to produce than the '73, with a total 1,004,675 manufactured from 1892 through 1941 in both solid and takedown variations. Model 1892 is the epitome of an easy shooting lever and saddle gun. Simplification of the elevator and feeding system gave the 1892 a much smoother action than previous models. This makes 1892 replicas very popular with Cowboy competitors. Armi Sport has developed a rich range of 1892 models for the sport of Cowboy Action Shooting and offers different calibres, barrel lengths and versions.

WINCHESTER 1886 SHORT HISTORY

Model 1886 was developed by John M. Browning on Winchester's request. The factory wanted a rifle for very powerful calibers. Model 1886 is one of the most robust lever action rifles ever produced by Winchester. From 1886 until 1935 about 160,000 pieces were manufactured in the versions rifle, carbine and musket. Model 1886 could chamber the most powerful black powder cartridges of its time: 45-70 Government, .45-90 and .50. At that time price was strongly influenced by the caliber, with the strongest calibers being much more expensive.

Armi Sport has developed a range of 1886 Lever Action with two calibers (45/70 and .444Marlin) and two versions (rifle and carbine) for traditional hunting. The carbine version has a 22" barrel and a full-length, 7-shot magazine, while the rifle version with octagonal 26" barrel has an 8-shot magazine capacity.

A NOTE ABOUT HISTORICAL FIREARM DESIGN

Armi Sport proudly manufactures finely crafted firearms product produced to famous historical designs. These firearms are manufactured using precise modern machinery and high quality modern materials. They are faithful reproductions of firearms originally designed in the nineteenth century; however, in choosing to own or use historical firearms the user has to recognize that there have been significant advances in firearms design and safety in the hundred years or more since these firearms were designed. Armi Sport manufactures these guns not as state of the art firearms, but as historically significant firearms for the collector. It is vital that the user be familiar with his firearm and possible safety risks that may be present in the design. Most significantly, the user should realize that the designs of safeties - or even the presence of adequate safeties - vary significantly on historical designs and do not offer the protection against accidental discharge that modern firearms safeties achieve.

Similarly, any firearm that is designed to be fired using black powder (or Pyrodex) has basic risks not found in modern cartridge firearms. Black powder is a dangerous explosive and has to be used and handled with extreme caution. The slightest miscalculation or carelessness with black powder firearms can result in serious injuries to the user. The frame and barrel are not warranted for damage caused by reloaded ammunition

WARNINGS

Armi Sport/ Chiappa Firearms is not responsible for damage to objects caused by misuse of the gun or for injuries to persons or animals, or in case of death, caused voluntarily or involuntarily by the gun user. Armi Sport/ Chiappa Firearms is not responsible for injuries caused by poor maintenance, misuse of the gun, unauthorized or improper modifications. Armi Sport/ Chiappa Firearms declines responsibility for the indirect consequences of any injuries and / or death of persons or animals, damage to objects caused by use of the gun or by primer explosion, by bullet's ricochet, or unsafe loading practices and / or procedure.

The gun you own is an accurate 19th century replica. Consequently its safety devices are limited to the technological knowledge of the period. Therefore the risks in using a gun like this are higher compared to a modern design gun. The complete and full knowledge of your firearm may help you to avoid serious injuries due to lack of safety devices. Read the entire manual and learn the proper use of the gun without live ammunition. It is important that you understand the proper use of this product. The life of the people close to you may depend on your safety. If the manual is not clear, please contact the dealer where you bought the gun or call the distributor or the manufacturer by using the contact information provided within this manual.

All our guns are tested in the Armi Sport/ Chiappa Firearms facility. To guarantee the gun is safe, it is sent to the National Proof House of Gardone Val Trompia – BRESCIA – ITALY - for proof testing. The Proof House tests the firearm with heavy loads then checks the barrel, chamber and headspace to make certain the firearm is safe for use with standard factory ammunition. The National Proof House will put their markings on the gun, according to the Italian law, certifying the gun is qualified and can be sold.

THE COURT OF BRESCIA - ITALY, WILL SETTLE ALL DISPUTES.

1892 Lever Action User's Guide

- 1. Read the instructions carefully before use.**
- 2. Be aware that you are handling a firearm; therefore your knowledge and behaviour may affect your life and those of the people close to you.**
- 3. Reading the manual and a careful examination of the gun are fundamental to avoid any kind of problem.**
- 4. Guns and ammunitions must be kept in different places**
- 5. ALWAYS keep guns and ammunitions out of reach of children.**
- 6. Store the gun in a clean dry and airy place after use to avoid rust in mechanical parts that may cause serious problems in functioning after a period of inactivity.**
- 7. After use it is always recommended to clean, oil and lubricate the gun with good quality oil.**
- 8. The gun must ALWAYS be stored unloaded, ALWAYS check that the chamber is empty.**
- 9. Being this firearm is a replica of original design, there is no modern safety. Pay great attention during transportation and use. Mechanical safety devices can fail. Developing intelligent, good safety habits is the best way to prevent accidents.**
- 10. The only safety is the hammer half cock, read chapter on firearms use. REMEMBER: No mechanical safety device is infallible.**
- 11. ALWAYS keep the gun unloaded when transporting it from home to the shooting areas. Carefully check that cartridge chamber is empty.**
- 12. Keep away from open flame or heating sources.**
- 13. Use only factory ammunition with specific loads intended for this firearm.**
- 14. When you walk around with the gun in a shooting area, ALWAYS keep the muzzle pointed in a safe direction.**
- 15. Never rest your finger on the trigger until the very moment you wish to shoot.**
- 16. Never lean the weapon loaded and with a closed breech block, it could fall and cause injury and death.**
- 17. Never shoot against a solid surface or in a pool of water, the projectiles could ricochet and shoot toward any direction.**
- 18. Before shooting ALWAYS check to ensure that the barrel is free of obstructions.**
- 19. After use, clean and lubricate the inside of the barrel with appropriate oil. Avoid grease or oil build up that can cause excessive pressure and result in serious personal injuries. Before using the gun again, inspect the barrel and chamber to make certain that there are no obstructions in the bore. Remove any oil residue with rod and dry patch before shooting.**
- 20. Accumulation of rust in the barrel can cause excessive pressures resulting in serious injury and may cause the explosion of the barrel. A rusted, pitted or eroded barrel should be replaced.**
- 21. Always wear shooting glasses when shooting to protect your eyes.**
- 22. Use hearing protection to prevent hearing loss from repeated exposure to gunfire.**
- 23. NEVER modify any parts of your gun. Any alteration may cause serious personal injury and voids the warranty.**
- 24. Only a qualified gunsmith may service the gun for repair or serious maintenance.**
- 25. Wash hands thoroughly after shooting and handling firearms to remove any unwanted residues.**
- 26. Use exclusively factory loaded ammunition of the caliber specified on the firearm barrel. Use of different calibers may cause serious personal injuries to you and to people close to you.**
- 27. In case of misfire, manually extract the cartridge from the chamber.**
- 28. Do not attempt to re-use unexploded ammunitions.**
- 29. Armi Sport/ Chiappa Firearms declines any responsibility for misuse of the firearm.**
- 30. In case of alteration of the firearm, Armi Sport/ Chiappa Firearms declines any civil and penal responsibility and will not refund any damage.**
- 31. The user is responsible for injuries or damages caused to him or to other persons.**

1892 Lever Action User's Guide

- 32. Do not use alcohol or drugs before or during shooting session and while handling guns.**
33. NEVER run with a loaded gun, don't cross any obstacle (fences or water courses, etc.) without having your firearm unloaded and in safety position.
34. Keep all bystanders behind you, standing beside a shooter is not a safe position.
35. Complete knowledge of your firearm can make the difference.

Lever Action 1892 & 1886 Range

MODEL	CODE	CALIBER	Barrel length		Total length		Grooves and rate		Weight		No. shots
			IN	CM	IN	CM	IN	KG	LBS		
1886 Rifle, octagonal barrel	920.285	45/70	26"	66	45"	115	6	1 X 18	4,1	9	8+1
1886 Rifle, octagonal barrel	920.286	.444 Marlin	26"	66	45"	115	12	1 X 38	4,1	9	8+1
1886 Carbine. Round barrel	920.287	45/70	26"	66	45"	115	6	1 X 18	4,1	9	7+1
1886 Carbine. Round barrel	920.288	.444 Marlin	26"	66	45"	115	12	1 X 38	4,1	9	7+1
RIFLE MOD. 1892	920.056	44/40 WIN	20"	50	38"	97	6	1 X 36	3	6,6	10 + 1
RIFLE MOD. 1892	920.052	44/40 WIN	24 1/4"	62	42" 1/8	107	6	1 X 36	3	6,6	12 + 1
RIFLE MOD. 1892	920.063	45 L.C.	20"	50	38"	97	6	1 X 16	3	6,6	10 + 1
RIFLE MOD. 1892	920.064	45 L.C.	24 1/4"	62	42" 1/8	107	6	1 X 16	3	6,6	12 + 1
RIFLE MOD. 1892	920.129	357 mag	20"	50	38"	97	6	1 X 19	3	6,6	10 + 1
RIFLE MOD. 1892	920.131	357 mag	24 1/4"	62	42" 1/8	107	6	1 X 19	3	6,6	12 + 1
RIFLE MOD. 1892	920.117	38 special	20"	50	38"	97	6	1 X 19	3	6,6	10 + 1
RIFLE MOD. 1892	920.119	38 special	24 1/4"	62	42" 1/8	107	6	1 X 19	3	6,6	12 + 1
RIFLE MOD. 1892	920.153	38/40 win	20"	50	38"	97	6	1 X 36	3	6,6	10 + 1
RIFLE MOD. 1892	920.155	38/40 win	24 1/4"	62	42" 1/8	107	6	1 X 36	3	6,6	12 + 1
RIFLE MOD. 1892	920.290	44 Mag	24 1/4"	62	42" 1/8	107	6	1 X 20	3	6,6	12 + 1
RIFLE MOD. 1892	920.289	44 RM	20"	50	38"	97	6	1 X 20	3	6,6	10 + 1
RIFLE MOD. TRAPPER 1892	920.130	45 LC	16"	40,6	34"	86	6	1 X 16	2,5	5,5	7 + 1
RIFLE MOD. TRAPPER 1892	920.162	357 MAG	16"	40,6	34"	86	6	1 X 19	2,5	5,5	7 + 1
RIFLE MOD. TRAPPER 1892	920.206	44 RM	16"	40,6	34"	86	6	1 X 20	2,5	5,5	7 + 1
L.A. CARBINE MOD. 1892	920.057	44/40 WIN	20"	50	38"	97	6	1 X 36	3	6,6	10 + 1
L.A. CARBINE MOD. 1892	920.067	45 L.C.	20"	50	38"	97	6	1 X 16	3	6,6	10 + 1
L.A. CARBINE MOD. 1892	920.133	357 mag	20"	50	38"	97	6	1 X 19	3	6,6	10 + 1
L.A. CARBINE MOD. 1892	920.121	38 special	20"	50	38"	97	6	1 X 19	3	6,6	10 + 1

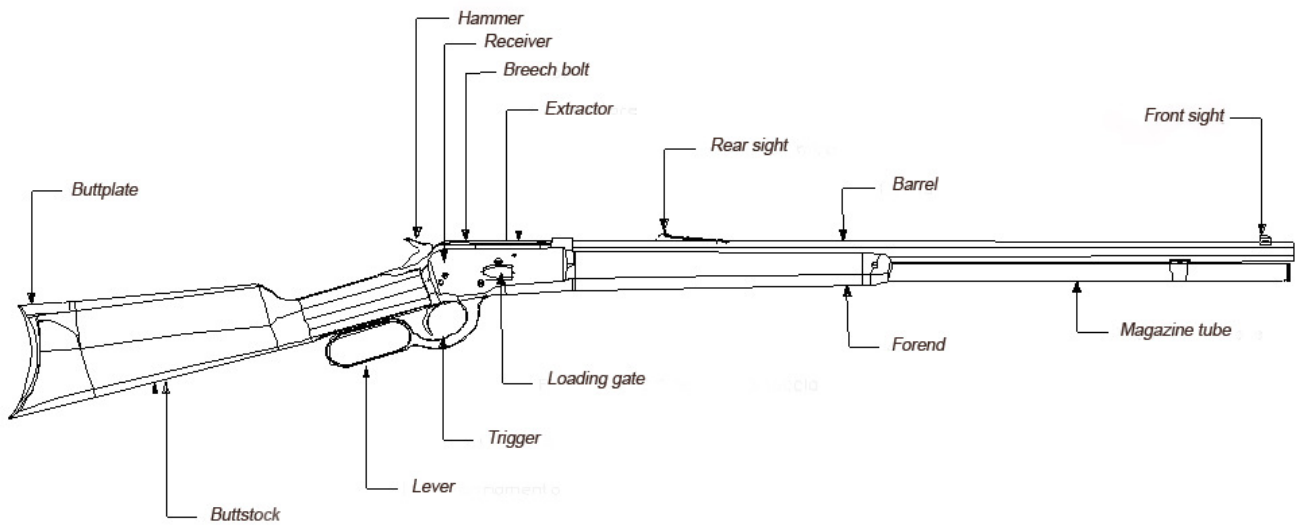
1892 Lever Action User's Guide

1892												
L.A. CARBINE MOD. 1892	920.157	38/40 win	20"	50	38"	97	6	1 X 36	3	6,6	10 + 1	
LA CARBINE MOD. 1892 Rio Bravo	920.100	45 LC	20"	50	38"	97	6	1 X 16	3	6,6	10 + 1	
LA CARBINE MOD. 1892 Rio Bravo	920.103	44/40 WIN	20"	50	38"	97	6	1 X 36	3	6,6	10 + 1	
LA CARBINE MOD. 1892 Rio Bravo	920.104	357 mag	20"	50	38"	97	6	1 X 19	3	6,6	10 + 1	
LA CARBINE MOD. 1892 Rio Bravo	920.106	38 special	20"	50	38"	97	6	1 X 19	3	6,6	10 + 1	
LA CARBINE MOD. 1892 Rio Bravo	920.108	38/40 win	20"	50	38"	97	6	1 X 36	3	6,6	10 + 1	
LA CARBINE MOD. 1892 Rio Bravo	920.205	44 RM	20"	50	38"	97	6	1 X 20	3	6,6	10 + 1	
1892 TAKE DOWN	920.053	44/40 WIN	24 1/4"	62	42" 1/8	107	6	1 X 36	3	6,6	12 + 1	
1892 TAKE DOWN	920.054	44/40 WIN	20"	50	38"	97	6	1 X 36	3	6,6	10 + 1	
1892 TAKE DOWN	920.065	45 L.C.	20"	50	38"	97	6	1 X 16	3	6,6	10 + 1	
1892 TAKE DOWN	920.066	45 L.C.	24 1/4"	62	42" 1/8	107	6	1 X 16	3	6,6	12 + 1	
1892 TAKE DOWN	920.123	357 Mag	20"	50	38"	97	6	1 X 19	3	6,6	10 + 1	
1892 TAKE DOWN	920.125	357 Mag	20"	50	38"	97	6	1 X 19	3	6,6	10 + 1	
1892 TAKE DOWN	920.111	38 special	20"	50	38"	97	6	1 X 19	3	6,6	10 + 1	
1892 TAKE DOWN	920.113	38 special	24 1/4"	62	42" 1/8	107	6	1 X 19	3	6,6	12 + 1	
1892 TAKE DOWN	920.147	38/40 win	20"	50	38"	97	6	1 X 36	3	6,6	10 + 1	
1892 TAKE DOWN	920.149	38/40 win	24 1/4"	62	42" 1/8	107	6	1 X 36	3	6,6	12 + 1	
1892 LEVER ACTION "PISTOL"	920.185	45 L.C.	12"	30,5	24"	61	6	1 X 16	3	6,6	6 + 1	
1892 LEVER ACTION "PISTOL"	920.292	44/40 WIN	12"	30,5	23"	60	6	1 X 36	3	6,6	6 + 1	
1892 L.A. "PISTOL" Take Down	920.182	45 L.C.	12"	30,5	23"	60	6	1 X 16	3	6,6	6 + 1	
1892 L.A. "PISTOL" Take Down	920.183	357 Mag	12"	30,5	23"	60	6	1 X 19	3	6,6	6 + 1	
1892 L.A. "PISTOL" Take Down	920.211	44 RM	12"	30,5	23"	60	6	1 X 20	3	6,6	6 + 1	

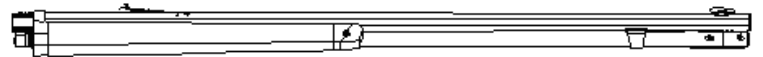
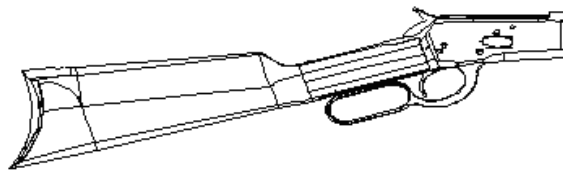
The codes for the above models are for the COLOUR CASE version; each version can be supplied with black finish with no surcharge; on request each weapon can be enriched with a beautiful engraving, selected or extra stock.

Each firearm is duly submitted to strong testing, to grant the highest security of the product, by the Italian Proof House in Gardone Valtrompia.

Lever Action main parts nomenclature



Lever Action Take Down



The 1892 and 1886 lever action models left a mark in the American history at the end of 19th century.

Armi Sport has reproduced a replica as close as possible to the original gun.

Magazine tube located below the barrel can take 7 to 14 shells according to caliber and model. (In the European version the number is limited to five due to local legislation). The safety (only half cock hammer) works the same as the original gun. Pay attention to safety. The Take Down version is extremely easy to transport thanks to the length reduction and furthermore allows the change of caliber with an interchangeable barrel (see chart).

These rifles are very well known also for the use in western movies.

Instructions for use

Firmly shoulder your gun before firing, hold the forend, having the buttplate well against your shoulder to reduce recoil.

Chamber the cartridge swinging the lever, then close it completely.

During this action, the shell will go from the magazine tube through the receiver and up in the barrel chamber.

Take aim and when on target, squeeze the trigger.

Now to extract the empty shell from the chamber, open the lever briskly.

The extractor will eject the shell that will be thrown up and slightly on the right side.

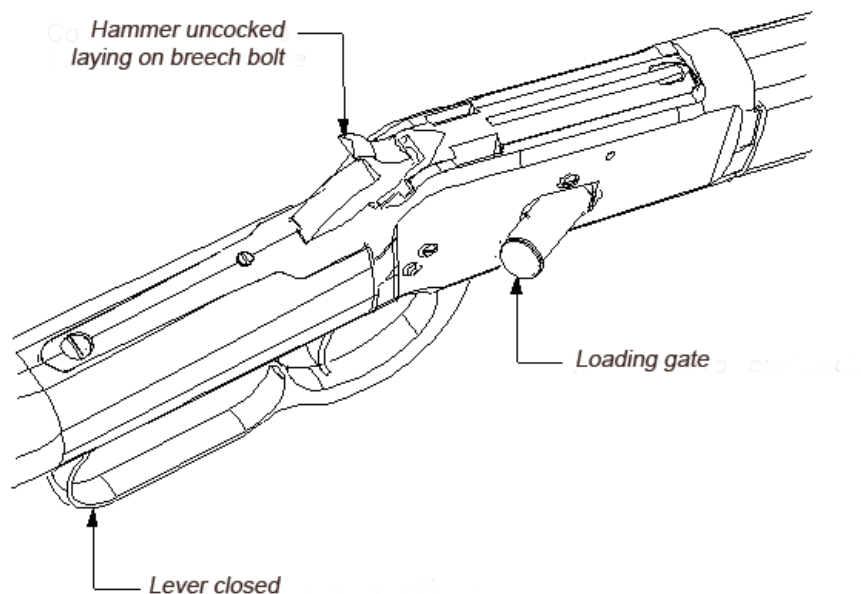
While the shell is ejected, a new cartridge is coming into the receiver and when the lever is closed the loading cycle is completed.

During this phase strictly follow the recommendations shown in "Warning" paragraph concerning the safety aspects for you and bystanders.

Loading the magazine

First check the caliber of the ammunition to be the same as indicated on the barrel.

Failure to follow this instruction can result in severe damage to your gun and possible serious injury to yourself or others.



With the muzzle pointed in a safe direction, the lever must be completely closed to load the magazine. The hammer must not be cocked. With thumb securing hammer pull the trigger and slowly lower the hammer.

Press the loading gate inward with the tip of the first cartridge until all but the rim has entered the loading gate, then insert the next cartridge in the same manner, pushing the preceding cartridge into the magazine.

Repeat this procedure with each cartridge, but push the last cartridge past the end of the loading gate, allowing the gate to snap closed. Do not exceed the recommended capacity of the magazine.

WARNING: for a smooth loading, we advise to use **FLAT NOSE** cartridges. As to cartridges cal. 38 for model 1892, please make sure the minimum length is 39 mm (1,53 in).

Finger position when levering

Put the fingers (we suggest middle, ring and little fingers) in the loading lever loop.

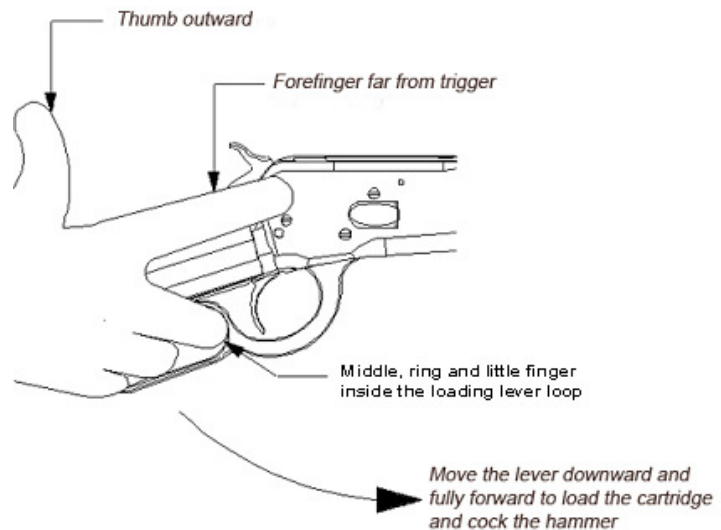
IMPORTANT: the forefinger must be always kept out of the triggerguard and away from the trigger not to risk accidental discharge.

The thumb should be kept outward far from the hammer.

When the lever is completely forward you can see the shell going through the magazine to the receiver.

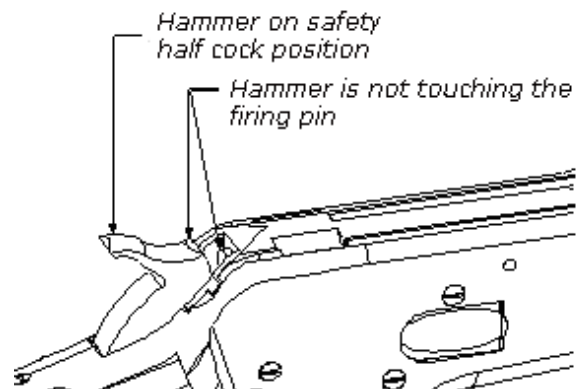
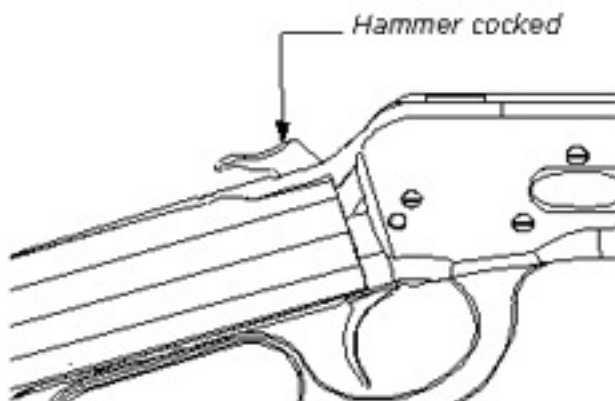
Close the lever also with firm and smooth action.

During this phase, the breech bolt has cocked the hammer.



an

Hammer in safety position



Hammer in safety position is strictly recommended when firing is not imminent and cartridge is chambered.

Hammer is at full cocked position when the action is cycled using the lever, now you can put in safety position. Place your thumb on the hammer and firmly hold it. While holding the hammer back, apply just enough pressure on the trigger to release it and gently lower the hammer. When the hammer is resting on the firing pin pull it slightly rearward until you hear the half cock click. This is the original safety position, if you pull the trigger, the hammer will not be released.

To start shooting you have to pull the hammer back to the full cock position.

Now you're ready to shoot.

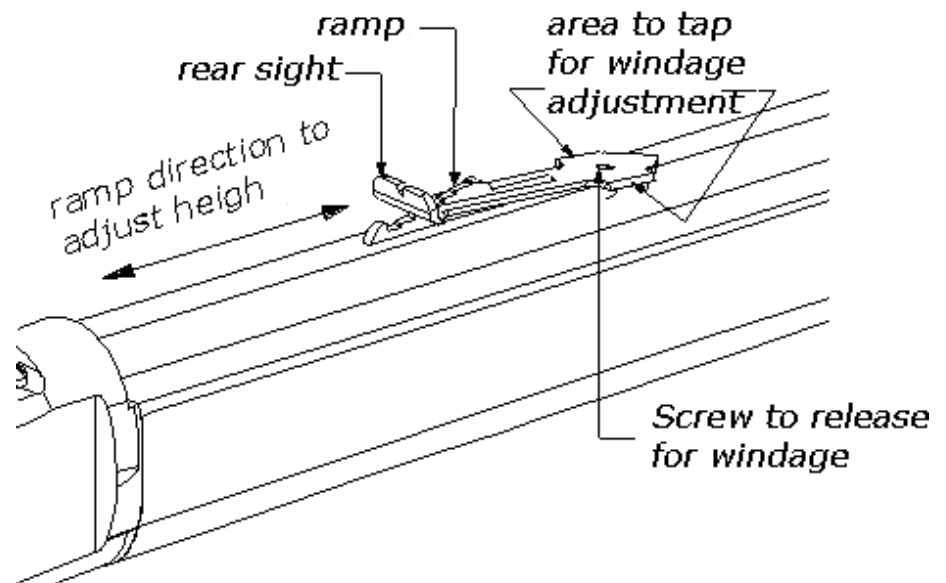
Rear sight adjustment

The rear sight is manually adjustable to shoot higher or lower by moving the rear sight ramp by one or more notches.

This adjustment will allow the rear sight to be adjusted lower or higher.

It's possible to adjust the rear sight for windage by following these steps:

- loosen the screw on the upper front side of the sight.
- Take a non-marking brass, plastic or fiber hammer and gently tap the rear sight base to the left or to the right according to the direction you wish to move the point of aim.
- Tighten the screw again.

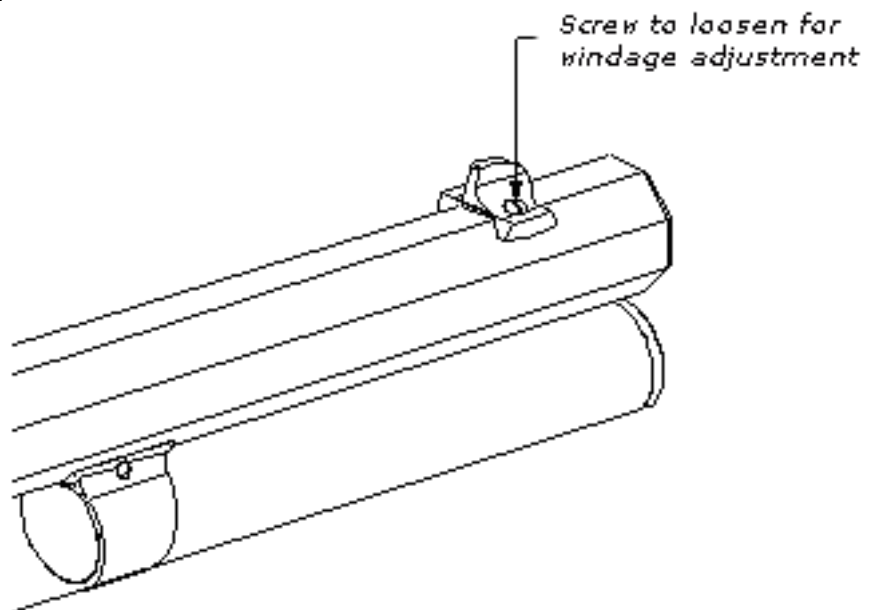


Front sight adjustment

Front sight is also adjustable by loosening the specific screw.

The front sight will move left or right direction.

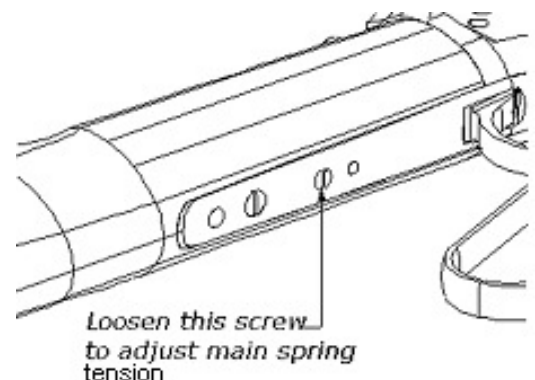
When placed in correct position, tighten the screw again.



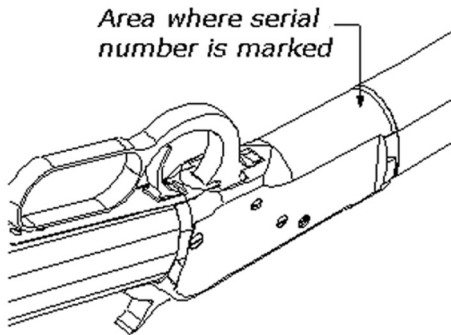
Main spring regulating screw

The power of the hammer percussion on the cartridge can be adjusted.

Use a screwdriver and work the screw shown in the drawing by tightening the screw the spring will be stronger. Loosening the screw the spring will be weaker.



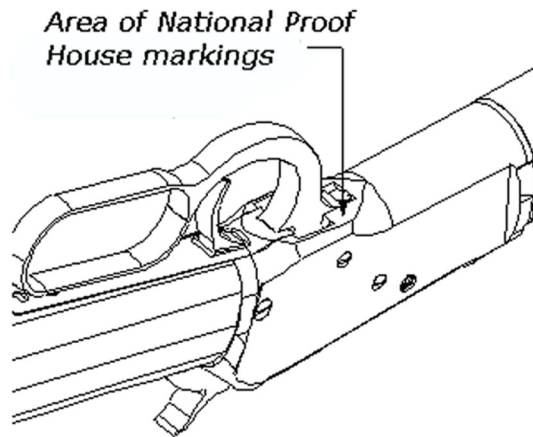
Area where serial number is marked under the receiver



The serial number of the gun is visible under the receiver. It must not be removed or modified for any reason.

Area marked by National Proof House

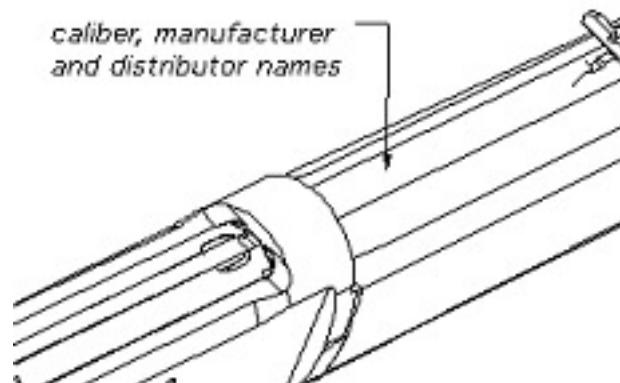
House are lever.



Homologation marks of National Proof visible under the receiver near the

Area of caliber, name of manufacturer and distributor.

Marks of distributor and manufacturer, caliber are visible in the upper area of the barrel close to rear sight.



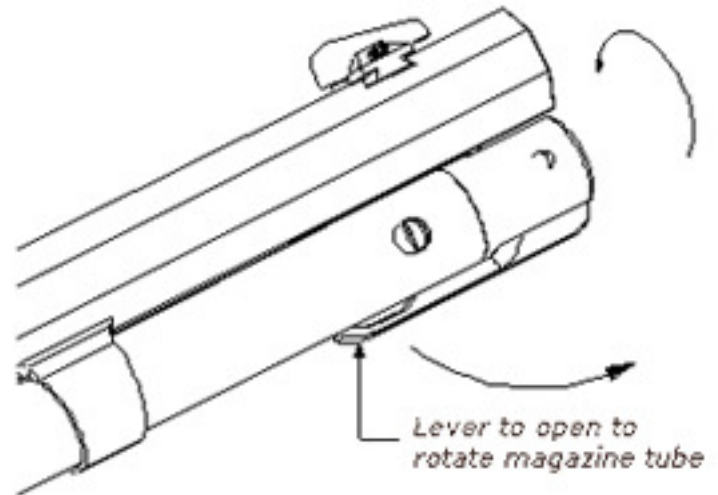
Take Down version

This version, previously described, maintain same way of use of the Lever Action 1892 but with barrel interchangeable.

Here is how to change or disassemble it.

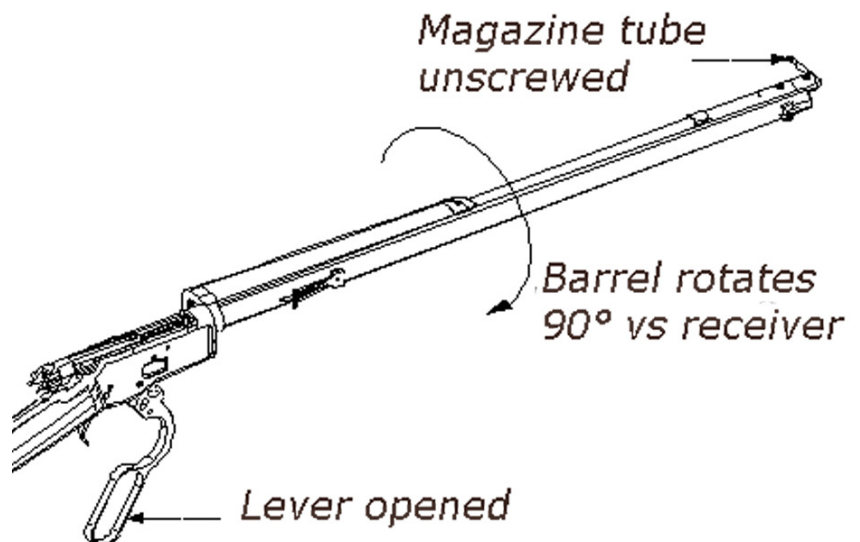
1st phase: magazine tube disassembly

Open the lever under the magazine tube.
Rotate the lever counter clockwise.
During this operation the tube will slip off.
When the tube is completely unscrewed,
open the finger lever and leave it open.
Note: light markings on the magazine tube
resulting from disassembly are normal.



2nd phase: barrel rotation 90°

Hold the stock in one hand and hold the forearm with the other.
Twist firmly the forearm in clockwise direction so that the barrel and the forearm rotate 90°.
Now slip off the barrel. To reassemble the rifle repeat the process in the reverse order, keeping the lever open during the operation.



Magazine reduction removal

In Italy the Ministry of Interior has recently limited the maximum number of cartridges in the magazine for a rifle to be only five.

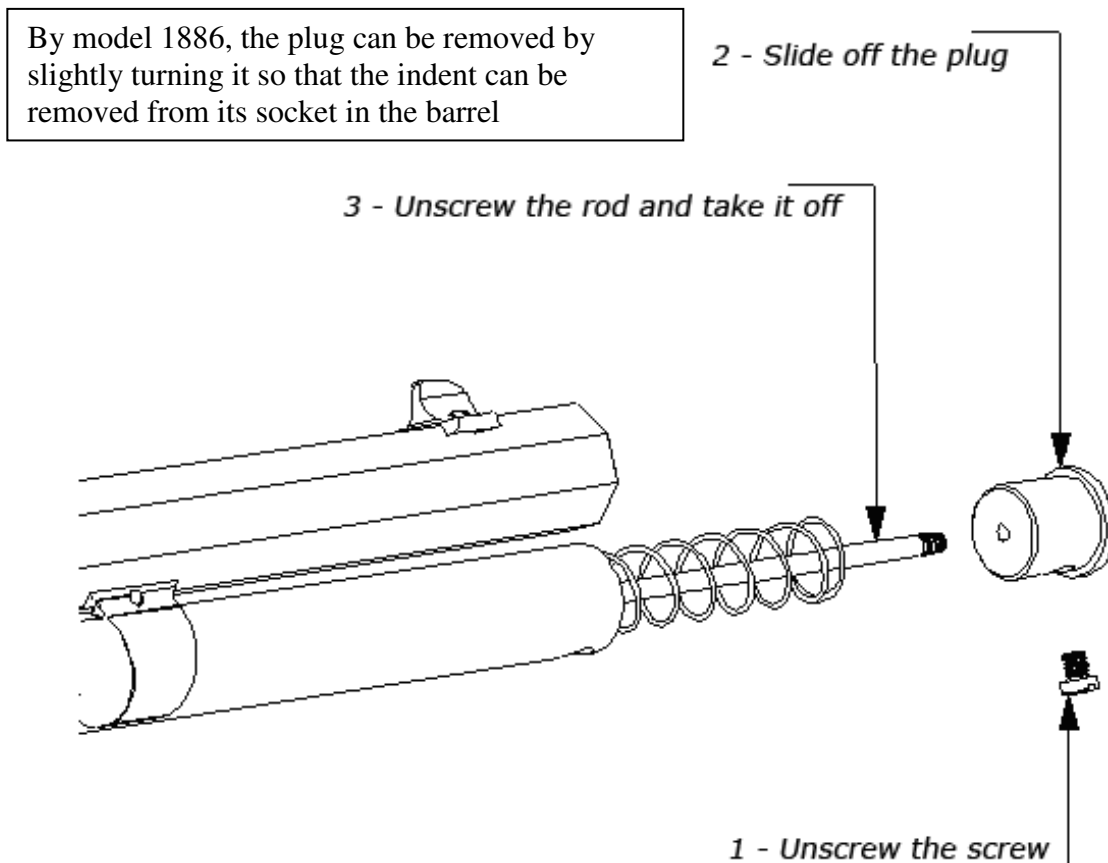
This rule has obliged us to use a **magazine reduction**.

In other countries, where this limitation is not required, the device may be removed.

Please check the drawing below carefully prior to proceeding with this operation. **WARNING: the magazine reduction cannot and must not be removed in the countries where the law require this limit.**

ARMI SPORT declines any responsibility on the violation of the device where there is such a rule, the person that will attempt with tampering will do it at his own danger and risk.

Please verify local legislation before any attempt of modification to the magazine capacity.



When the rod has been taken off, replace the plug in its seat.

In Take Down version there are two screws to disassemble.

Ordinary and extraordinary maintenance

- Before performing any cleaning procedures, always make certain there are no cartridges in the chamber, magazine or action.
- "Ordinary maintenance" refers to actions the user should take to keep the gun in good working conditions.
- "Extraordinary maintenance" means to replace broken parts and therefore disassemble the gun. In this case only authorized personnel may or qualified gunsmith should take action.
- You should clean your Model 1892 after every day of shooting and more often if it becomes excessively dirty. Your qualified gun shop will suggest which lubricant would be better to use.
- Check the action to be smooth, in case the lever becomes hard to work, check internally for residue or fragments of leads or other debris.
- If the problem persists your gun should be taken to a qualified gunsmith to be examined carefully.
- Do not use pure silicon or lanolin.
- After extended period of heavy use or inactivity, your gun should be taken to a qualified gunsmith to have the action disassembled for professional cleaning and lubrication.
- In the following pages you will find exploded views with parts list
- When ordering parts, it's important to specify date of purchase, serial number, model, caliber and item reference of the part needed.
- If the gun has a problem that you cannot fix, DO NOT FIRE it but send it to an authorized center for a check-up
- Below are some suggestions to solve common malfunctions.

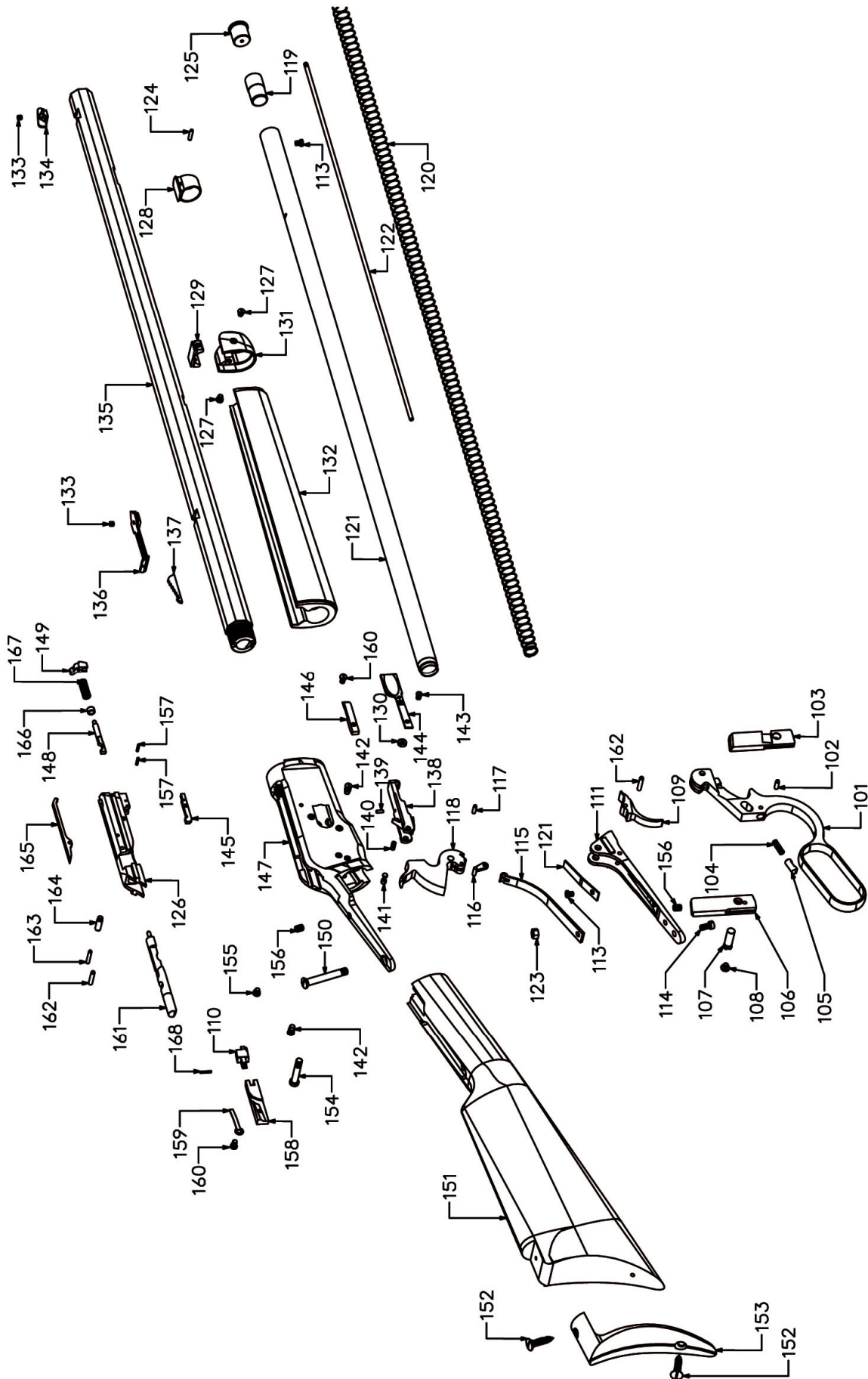
Problems, causes, solutions

Problems	Causes	Solutions
1-The shell does not go into the magazine tube	1- The lever is not fully closed. -The magazine tube is already full. -In Take Down version the magazine tube is not completely screwed in.	1-Close firmly the lever -Screw in magazine tube
2- The shell does not go out of the magazine tube.	2- In Take Down the magazine tube is not completely screwed in. -Magazine tube spring jamming -Foreign body inside the tube	2-Screw in magazine tube -Slightly hit the magazine tube to disengage it -Disassemble the tube, clean it from residual of powder or other foreign matter.
3- The shell does not go into the chamber	3-Wrong caliber, too large -Wrong maneuver in working the lever - barrel entrance damaged	3- Check the caliber on the barrel and use the correct one indicated -Remove the shell in incorrect position and repeat the operation paying attention that the lever will make a complete run forward to lift up correctly the shell for chambering
4- The rifle doesn't shoot	4-Wrong caliber -Defective primer in the cartridge -Lever not correctly closed -Weak hammer hit	-Remove any eventual residue or rust in the chamber 4-Check the caliber on the barrel and use the correct ammunition -Manually remove the unexploded cartridge -Firmly close the lever
5-The empty shell is not ejected	5-The extractor is broken -Shell deformed and stuck	-Increase main spring tension with the regulating screw. See specific chapter. 5-Change the extractor

Parts list 1892 Lever Action

Pos.	Item ref.	Q.ty	Description	Pos.	Item ref.	Q.ty	Description
101	770,213	1	Lever	136	790,18	1	Rear sight
102	730,462	1	friction stud stop pin	137	770,237	1	Rear sight leaf
103	770,216	1	Locking bolt, right	138	770,205	1	carrier
104	720,012	1	friction stud spring	139	130,029	1	carrier stop pin
105	730,461	1	friction stud	140	720,06	1	carrier stop spring
106	770,217	1	Locking bolt, left	141	730,479	1	carrier stop
107	730,464	1	locking bolt pin	142	730,478	2	carrier screw
108	730,465	1	locking bolt pin screw	143	730,468	1	loading gate screw
109	770,228	1	Trigger	144	098,184	1	loading gate assembly
110	770,209	1	cartridge stop	145	770,231	1	ejector lever stop
111	770,226	1	Trigger plate	146	770,21	1	cartridge guide right
112	721,098	1	Trigger spring	147	770,232	1	Receiver/frame
113	730,826	2	Magazine pin	148	770,214	1	ejector pin
114	730,473	1	main spring screw	149	770,212	1	ejector
115	721,097	1	Main spring	150	730,471	1	receiver tang screw
116	770,229	1	Stirrup	151	780,046	1	butt stock
117	730,467	1	Stirrup pin	152	730,267	2	butt plate screw
118	770,227	1	Hammer	153	790,178	1	butt plate
119	730,483	1	magazine follower	154	730,466	1	hammer screw
120	720,071	1	magazine spring	155	730,469	1	lever- breech bolt hole screw
121	730,485	1	magazine tube	156	730,475	2	diopter base hole screw
122	730,494	1	magazine reduction rod	157	130,069	2	cartridge stop joint pin
123	150,001	1	nut	158	770,211	1	cartridge guide left
124	730,487	1	magazine ring pin	159	721,102	1	cartridge stop spring
125	730,486	1	magazine plug	160	730,477	2	cartridge guide screw
126	770,204	1	breech bolt	161	770,206	1	firing pin
127	730,480	2	Nose cap screw	162	730,460	2	firing-pin pin / trigger pin
128	770,238	1	magazine ring	163	730,459	1	extractor - breech bolt pin
129	790,181	1	Tennon	164	730,458	1	ejector - lever pin
130	730,492	2	loading gate nut	165	770,230	1	Extractor
131	790,184	1	Nose cap	166	730,457	1	ejector collar
132	780,047	1	Forend	167	720,07	1	ejector spring
133	730,481	2	Front sight screw octagonal barrel	168	730,587	1	carrier stop pin
134	770,247	1	Front sight for octagonal barrel				
135	710,141	1	Barrel				

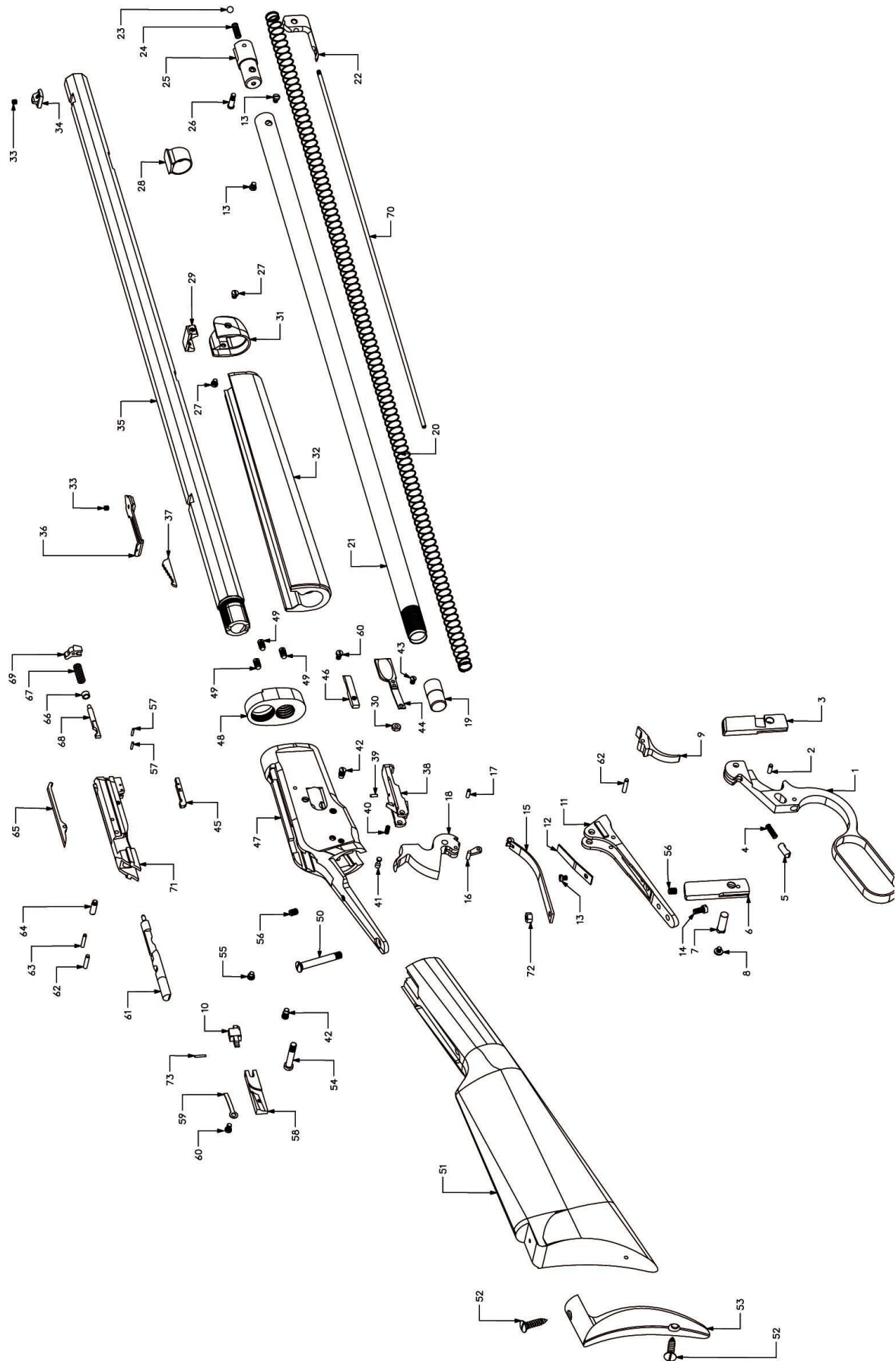
EXPLODED VIEW 1892 LEVER ACTION



Parts list 1892 Lever Action Take Down

Pos.	Item	Description	Pos.	Item	Description
1	770,213	Lever	36	790,180	Rear sight
2	730,462	friction stud stop pin	37	770,237	Rear sight leaf
3	770,216	Locking bolt, right	38	770,205	carrier
4	720,012	friction stud spring	39	130,029	carrier stop pin
5	730,461	friction stud	40	720,060	carrier stop spring
6	770,217	Locking bot, left	41	730,479	carrier stop
7	730,464	locking bolt pin	42	730,478	carrier screw
8	730,465	locking bolt pin screw	43	730,468	spring cover screw
9	770,228	Trigger	44	098,184	Loading gate assembly
10	770,209	cartridge stop	45	770,231	ejector lever stop
11	770,226	Trigger plate	46	770,210	cartridge guide right
12	721,098	Trigger spring	47	770,215	Receiver/frame
13	730,472	Trigger spring screw	48	770,219	receiver addition take down
13	730,472	magazine plug screw	49	730,470	receiver addition take down screw
13	730,472	magazine plug screw	50	730,471	receiver tang screw
14	730,473	main spring screw	51	780,046	butt stock
15	721,097	Main spring	52	730,267	butt plate screw
16	770,229	Stirrup	53	790,178	butt plate
17	730,467	Stirrup pin	54	730,466	hammer screw
18	770,227	Hammer	55	730,469	lever- breech bolt hole screw
19	730,483	magazine follower	56	730,475	diopter base hole screw
20	720,071	magazine spring	57	130,069	cartridge stop joint pin
21	730,448	Loading tube	58	770,211	cartridge guide left
22	770,221	magazine disassembling lever	59	721,102	cartridge stop spring
23	130,045	Sphere diam. 5	60	730,477	cartridge guide screw
24	720,035	magazine disassembling lever spring	61	770,206	firing pin
25	730,449	magazine plug	62	730,460	firing-pin pin / trigger pin
26	730,484	magazine disassembling lever screw	63	730,459	extractor - breech bolt pin
27	730,480	Nose cap screw	64	730,458	ejector - lever pin
28	770,222	magazine ring	65	770,230	Extractor
29	790,181	Tennon	66	730,457	ejector collar
30	730,492	loading gate nut	67	720,070	ejector spring
31	790,184	Nose cap	68	770,214	ejector pin
32	780,047	Forend	69	770,212	ejector
33	730,481	Front sight screw - octagonal barrel	70	730,494	magazine reduction rod
33	730,481	Rear sight base screw - octagonal barrel	71	770,204	breech bolt
34	770,247	Front sight for octagonal barrel	72	150,001	nut
35	710,134	Barrel 24 1/4" 44/40 caliber	73	730,587	cartridge stop pin

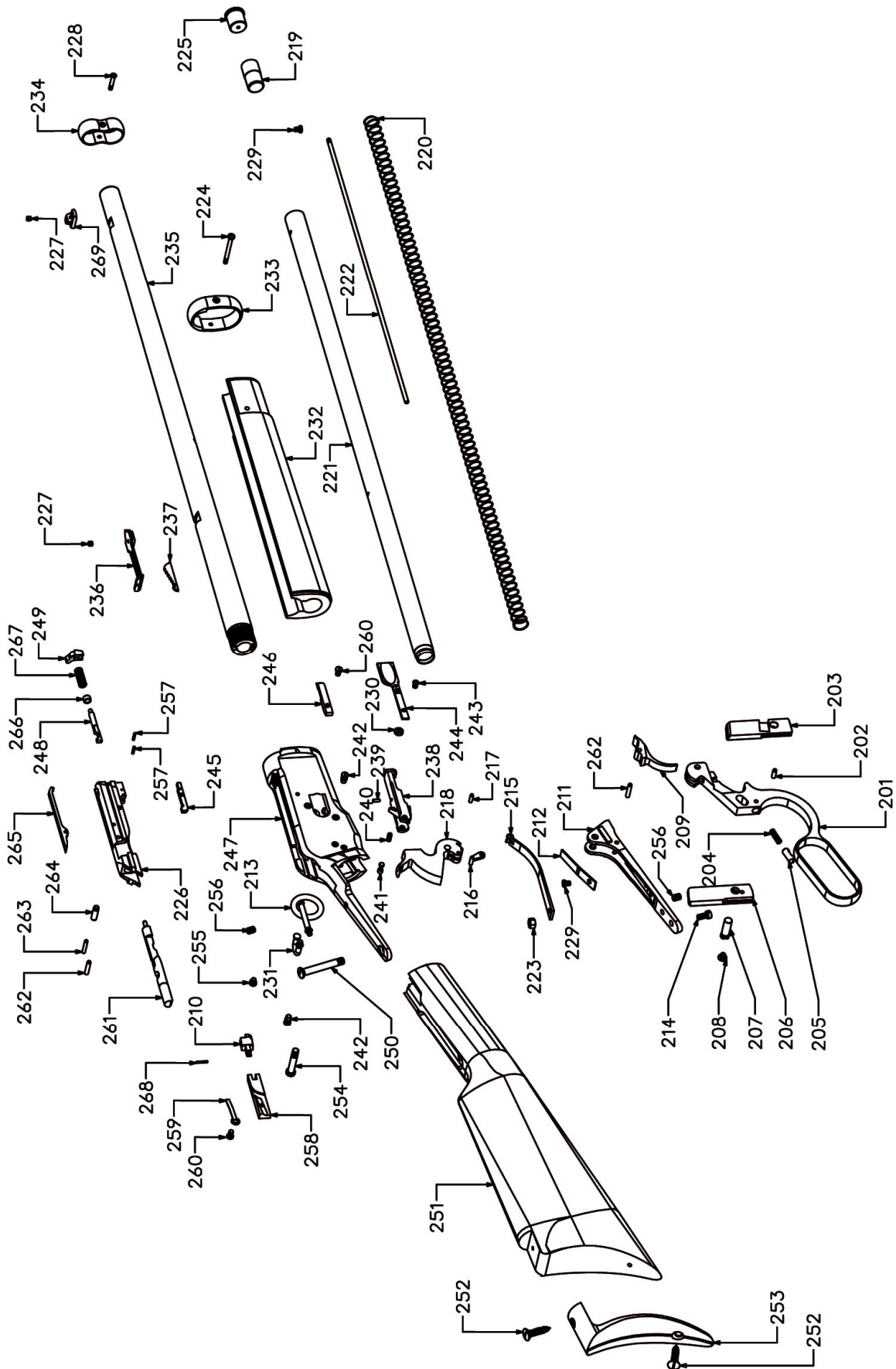
EXPLODED VIEW 1892 LEVER ACTION TAKE DOWN



Parts list 1892 Lever action carbine

Pos.	Codice	Q.ty	Description	Pos.	Codice	Q.ty	Description
201	770,213	1	Lever	236	O98,240	1	Rear sight assy Buckhorn
202	730,462	1	friction stud stop pin	237	770,237	1	Rear sight leaf
203	770,216	1	Locking bolt, right	238	770,205	1	carrier
204	720,012	1	friction stud spring	239	130,029	1	carrier stop pin
205	730,461	1	friction stud	240	720,060	1	carrier stop spring
206	770,217	1	Locking bot, left	241	730,479	1	carrier stop
207	730,464	1	locking bolt pin	242	730,478	2	carrier screw
208	730,465	1	locking bolt pin screw	243	730,468	1	spring cover screw
209	770,228	1	Trigger	244	O98,184	1	loading gate assembly
210	770,209	1	cartridge stop	245	770,231	1	ejector lever stop
211	770,226	1	Trigger plate	246	770,210	1	cartridge guide right
212	721,098	1	Trigger spring	247	770,255	1	Receiver/frame
213	730,088	1	saddle ring	248	770,214	1	ejector pin
214	730,473	1	main spring screw	249	770,212	1	ejector
215	721,097	1	Main spring	250	730,471	1	receiver tang screw
216	770,229	1	Stirrup	251	780,046	1	butt stock
217	730,467	1	Stirrup pin	252	730,267	2	butt plate screw
218	770,227	1	Hammer	253	790,178	1	butt plate
219	730,483	1	magazine follower	254	730,466	1	hammer screw
220	720,071	1	magazine spring	255	730,469	1	lever- breech bolt hole screw
221	730,511	1	Loading tube	256	730,475	2	diopter base hole screw
222	730,494	1	magazine reduction rod	257	130,069	2	cartridge stop joint pin
223	150,001	1	nut	258	770,211	1	cartridge guide left
224	730,507	1	rear band screw	259	721,102	1	cartridge stop spring
225	730,486	1	magazine plug	260	730,477	2	cartridge guide screw
226	770,204	1	breech bolt	261	770,206	1	firing pin
227	730,481	1	Front sight screw	262	730,460	2	firing-pin pin / trigger pin
228	730,508	1	front band screw	263	730,459	1	extractor - breech bolt pin
229	730,826	2	Magazine pin	264	730,458	1	ejector - lever pin
230	730,492	2	loading gate nut	265	770,230	1	Extractor
231	730,510	1	saddle ring holder	266	730,457	1	ejector collar
232	780,047	1	Forend	267	720,070	1	ejector spring
233	770,253	1	rear band	268	730,587	1	cartridge stop pin
234	770,254	1	front band				
235	710,153	1	Barrel 20" 44/40 caliber				

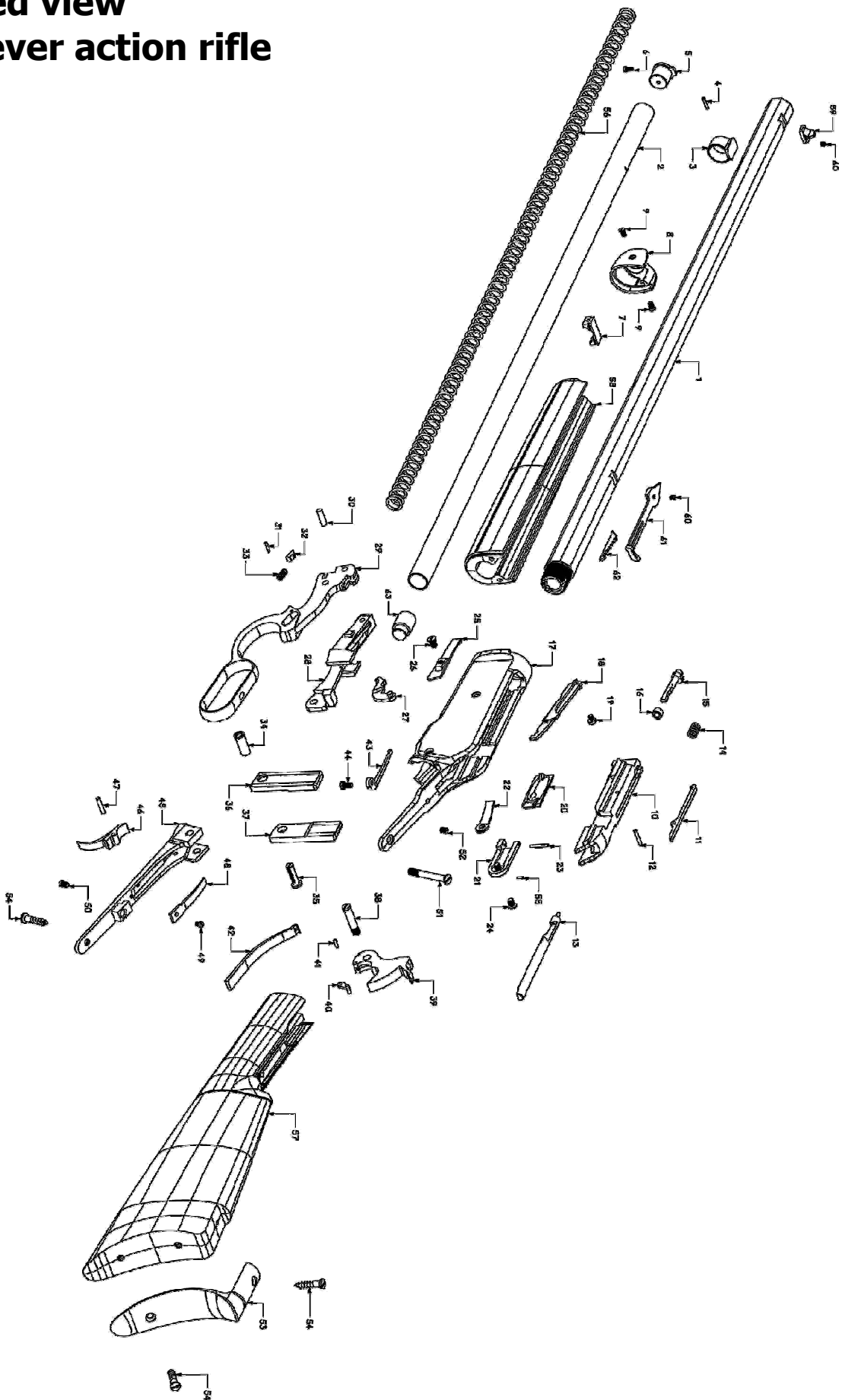
EXPLODED VIEW 1892 LEVER ACTION CARBINE



Parts list 1886 Lever action rifle

Pos	Code	Description	Pos	Code	Description
1	710295	Barrel cal. 45/70, octagonal 26"	33	720033	Pin spring
2	730884	Loading tube	34	730861	Finger lever bushing
3	770510	Magazine ring pin	35	730860	Lever bushing pin
4	730487	Magazine ring	36	770490	Locking bolt, right
5	730865	Magazine plug	37	770491	Locking bot, left
6	730859	Loading tube screw	38	730851	Hammer screw
7	770496	Tennon	39	770502	Hammer
8	790219	Nose cap	40	770229	Stirrup
9	730858	Nose cap screw	41	730467	Stirrup pin
10	770497	Breech block	42	721137	Main spring
11	770511	Extractor	43	721138	Carrier spring
12	730459	Extractor - breech bolt pin	44	730855	Carrier spring screw
13	730886	Firing pin	45	770495	Trigger plate
14	720120	Ejector spring	46	770504	Trigger
15	730890	Ejector	47	730888	Trigger pin
16	730895	Ejector ring	48	721136	Trigger spring
17	770492	Receiver/frame	49	730849	Trigger spring screw
18	770500	Cartridge guide	50	730852	Trigger spring adjust. screw
19	730850	Cartridge guide screw	51	730857	Tang screw
20	790220	Loading gate - mobile part	52	730856	Diopter grub screw
21	770501	Loading gate - fixed part	53	790218	Butt plate
22	721135	Loading gate spring	54	730908	Butt plate screw
23	730863	Loading gate pin	55	730893	Loading gate stop pin
24	730853	Loading gate screw	56	720121	Spring 680x14,1x1
25	790221	Cartridge stop	57	780098	Stock for octagonal barrel
26	730854	Cartridge stop screw	58	780099	Forend
27	770499	Carrier hook	59	770247	Front sight
28	770509	Carrier	60	730481	Front and rear sight grub screw
29	770494	Lever	61	770514	Rear sight
30	730887	Breech block lever pin	62	770237	Rear sight leaf
31	130005	Friction stud pin	63	730864	Magazine follower
32	730889	Lever pin			

Exploded view 1886 Lever action rifle



WARRANTY CONDITIONS

Armi Sport guarantees that our products are scrupulously checked against defects in materials, workmanship and aesthetical and functioning problems.

In case you find a defect in one of our products, you should immediately contact the DEALER/SHOP/GUNSMITH where you have bought your gun. The seller will indicate the conditions for the repair, which will be either made directly by them or through our assistance.

ATTENTION: end users are not allowed to ship any gun directly to Armi Sport for repair, either under guarantee or against payment. Transportation of weapons is strictly regulated and the documents which are required can solely be issued by companies with specific authorization.

1. Armi Sport will warrant for structural or project defects without any time limit.
2. Armi Sport guarantees, for a year after the purchase date, the free substitution of parts for defects which have been found out also during use: wear of parts which shouldn't be subject to wear, or excessive wear of parts subject to wear. The customer will have to give evidence of the purchase date with a bill or other valid proof.
3. In case the defect under cover of guarantee is not repairable, Armi Sport will provide for a free substitution of the weapon.

ARMI SPORT RESERVES THE INSINDACABLE FACULTY OF DEFINING THE TYPE OF DEFECT OF THE WEAPON, AND THEREFORE TO STATE WHETHER THE DEFECT IS COVERED BY GUARANTEE –Armi Sport's decision will be fair but final.

Armi Sport will be allowed a timing of 60 days for repair under guarantee, and 90 days for free substitution.

We strongly recommend that you keep the receipt or proof of purchase for any Armi Sport product

THE GUARANTEE IS VOID IN CASE:

- Inadequate ammunition has been used (any ammunition but those commonly on sale, reloaded ammunition, different from caliber and specification indicated on the gun barrel)
- The gun failed to be provided proper maintenance and cleaning
- The gun has been modified without our prior consent
- Unauthorized, inadequate or incorrect repairs have been carried out
- Parts subject to wear and corrosion
- Damage (improper use of the gun by the user)
- Expiry of the guarantee

In the above cases the repair, if carried out, will be charged to the customer

The guarantee does not cover parts subject to wear and corrosion

In case non original spare parts are used, the guarantee or any service contract with Armi Sport will be void.

ATTENTION: delivery expenses to and from the service center are not covered by the guarantee and will be charged to the customer.

In case, for any valid reason, you do not have the possibility to obtain repair under guarantee at the shop where you bought the gun, you may contact us directly; we will indicate a local dealer to support you with the repair file:

**e-mail: info@armichiappa.com - Phone: +39/030/9749065
USA: e-mail: info@chiappafirearms.com - Phone: 937-835-5000**

Should Armi Sport become aware of a defect of the rifle during the guarantee period, the defective part will be substituted free of charge.

This instruction manual must always follow the firearm, also in case the owner should change

Procedure for the usage of the guarantee

BEFORE shipping the weapon back for repair, the customer should contact the gunshop where the product was bought. The customer should supply proper information on the defect, and the relevant file will then be started.

The gun shop will be given an "NDR" (Repair Number). The weapon will have to be shipped back to the gun shop in its original packing, with a copy of the purchase date, the Guarantee Form (attached) duly filed with indication of the NDR number, according to the instructions of the dealer.

WARNING: the returned gun must be protected with an adequate packaging; any damages occurred during transportation and handling will be the customer's responsibility

Request form

REPAIR UNDER GUARANTEE

NdR NDR :

**Please write in the above box
the Repair Number you were
given by the gun shop**

1. Customer data:

- Name: _____
- Address : _____
- Town : _____
- ZIP Code : _____
- Phone : _____ Available from ____ to ____
- Fax : _____

2. Product information:

- Model : _____
- Serial number : _____

3. Gun Shop - dealer:

- Purchase date : _____
- Dealer name : _____
- Dealer address : _____

4. Description of defect:

Documents to enclose: Proof of the purchase date



Armi Sport
di Chiappa Silvia & C Snc
Via Milano N°2 Azzano Mella (BS)
Tel. 030 9749065 Fax 030 9749232
www.armichiappa.com
email: info@armisport.com



Kimmar Srl
Via Milano N°2 Azzano Mella (BS)
Tel. 030 9749065 Fax 030 9749232
www.armichiappa.com
email: info@kimmar.com



Chiappa Firearms, Ltd.
6785 W. Third Street
Dayton, OH 45427 USA
Tel. 937-835-5000
www.chiappafirearms.com
email: info@chiappafirearms.com